

20
CANADA
SQUARE
CANARY
WHARF



20,828

SQ FT



FULLY FITTED
&
FURNISHED



TAKE THE VR TOUR



2.85M FLOOR
TO CEILING HEIGHT



NEW
RECESSED
LED
LIGHTING

DUAL ACCESS BUILDING
RECEPTION LOBBY



14 CYCLE
SPACES

SHOWER &
CHANGING
FACILITIES

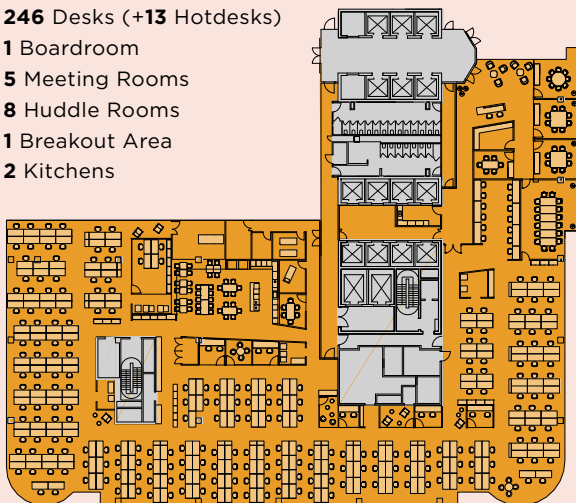


PART 6TH FLOOR

20,828 SQ FT / 1,935 SQ M

246 Desks (+13 Hotdesks)

- 1 Boardroom
- 5 Meeting Rooms
- 8 Huddle Rooms
- 1 Breakout Area
- 2 Kitchens



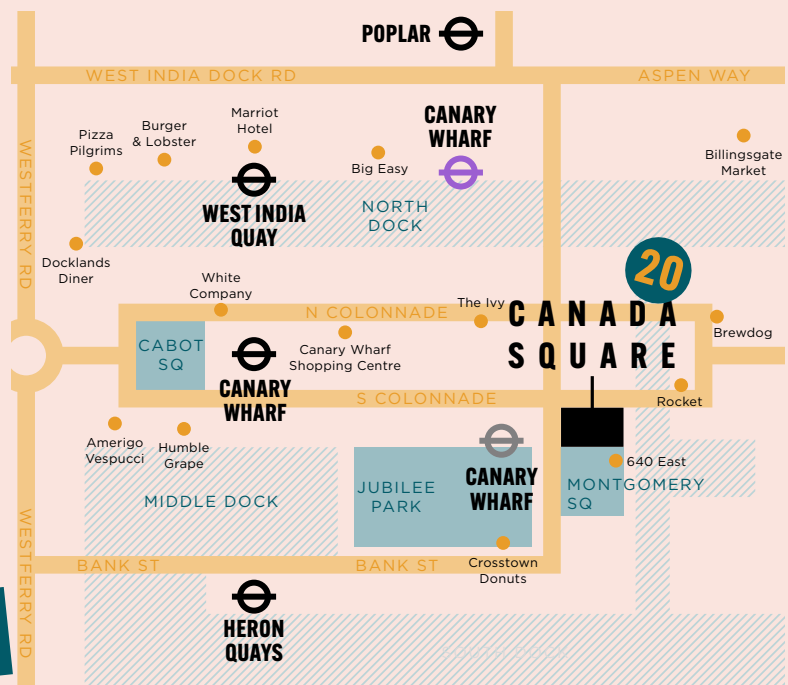
S COLONNADE



MONTGOMERY ST



NEW STATE OF THE ART
TOILETS DESIGNED BY
SHEPPARD ROBSON



**AVISON
YOUNG**

Chris Commins
07917 874139
chris.commins@avisonyoung.com
Linkedin

Alfie John
07932 530032
alfie.john@avisonyoung.com
Linkedin

Jamie Nurcombe
07718 235493
jamie.nurcombe@avisonyoung.com
Linkedin

Twitter
Instagram
Linkedin

Avison Young hereby gives notice that the information provided either for itself, for any joint agents or for the vendors lessors of this property whose agent Avison Young is in this brochure is provided on the following conditions:
1) The particulars are set out as a general outline only, for the guidance of intending purchasers and/or lessees and do not constitute an offer or contract, or part of an offer or contract. 2) All descriptions, dimensions and references to this property's condition and any necessary permission for use and occupation, and any other relevant details, are given in good faith and are believed to be correct. However, any intending purchasers or tenants should not rely on them as statements or representations of fact but satisfy themselves of their correctness by inspection or otherwise. 3) No person in the employment of Avison Young, or any joint agents, has any authority to make or give any representation or warranty whatsoever in relation to the property or properties in this brochure. 4) All prices quoted are exclusive of VAT. Avison Young shall have no liability whatsoever in relation to any documents contained within the brochure or any elements of the brochure which were prepared solely by third parties, and not by Avison Young.

Design and production: www.stuartchapmandesign.co.uk 020 3983 1665